

# BOC-6 6" CARVEL BOLLARD

The 6-inch steel bollard with reflectors is a tough and sturdy visual marker to block traffic from forbidden areas. Made of powder-coated galvanized steel, the BOC648 has four (4) recessed reflective sheeting stripes that provide high visibility day and night. Easy to install, it is inserted in the sleeve anchor (see the corresponding product page for details) and is as easily removed if needed, using the extractor tool. This 6" bollard is ideal for both temporary and permanent installation where vehicles are prohibited. Available in black with white or yellow reflective sheeting.



BLOCKS VEHICLE  
ACCESS



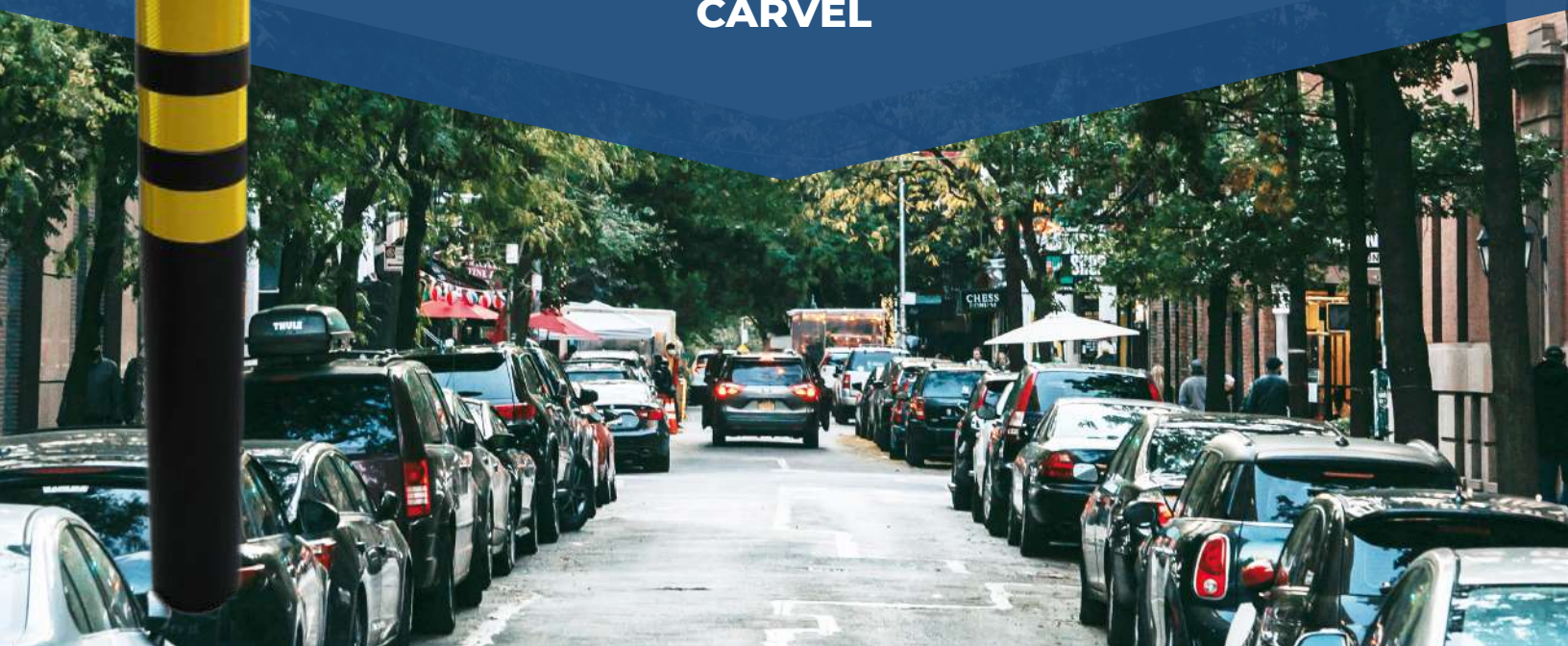
EASY INSTALLATION ON  
MULTIPLE SURFACES



TOUGH AND STURDY

# BOLLARDS

## CARVEL



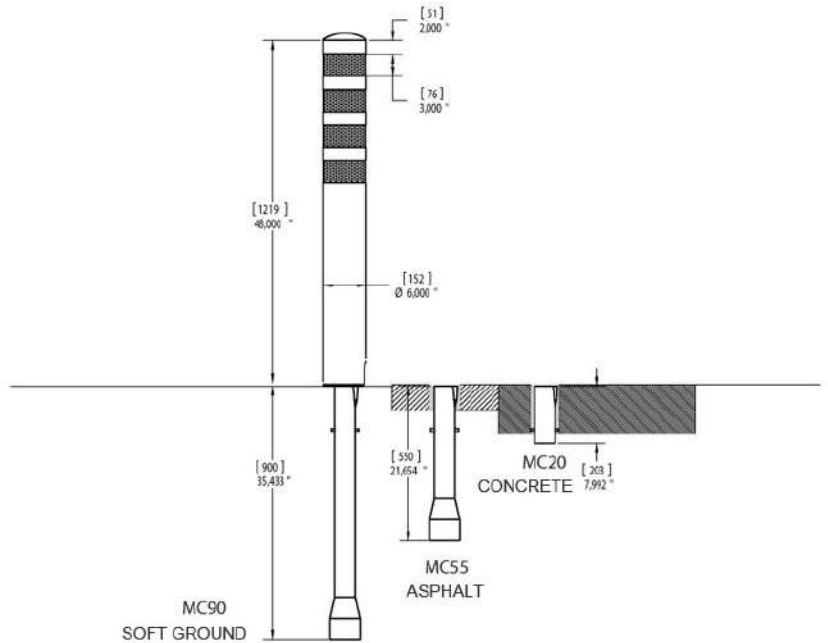


# TECHNICAL SPECIFICATIONS OF THE BOC 648

## 6" CARVEL BOLLARD BOC 648

### Features

<b>Material</b>	Steel ASTM A500
<b>Rust protection</b>	Hot-dip galvanised
<b>Finish</b>	Powder coated painted
<b>Color</b>	Black
<b>Reflective stripe</b>	3" White or Yellow ASTM Type IV
<b>Height</b>	48" (1220 mm)
<b>Bollard diameter</b>	6" (152 mm)
<b>Weight</b>	50 lbs (23 kg)



Product Number	Description	Box : Dimension - Weight	HSS Code
<b>Assembly kit</b>			
#30326	Carvel Bollard 6" (150mm) x 48" (1220mm) Galvanised Steel & Black painted c/w 4 White reflective bands	6 x 48 in – 50 lbs	N/A
#30327	Carvel Bollard 6" (150mm) x 48" (1220mm) Galvanised Steel & Black painted c/w 4 Yellow reflective bands	6 x 48 in – 50 lbs	N/A
<b>Options</b>			
#30708	Track Spike .375 x 3" – High Carbon Steel	Call for info	N/A
	200mm Carvel Sleeve Anchor (Concrete Installation)	Call for info	N/A
	550mm Carvel Sleeve Anchor (Asphalt Installation)	Call for info	N/A
	900mm Carvel Sleeve Anchor (Ground Installation)	Call for info	N/A

**Included in kit :** Two (2) years Limited Warranty against defects in workmanship and materials.



**TRACK SPIKE**  
.375 X 3"  
#30708



**CARVELLE NAIL EXTRACTOR**  
#30924



**SLEEVE ANCHOR CAP**  
#32534