

# STP-LUX SMART CROSSWALK LIGHTING SYSTEM

Pedestrians must be visible day and night to be safe when crossing the road. The STP-LUX crosswalk lighting system was specifically designed to meet the visibility needs of both drivers and pedestrians. Thanks to its asymmetric optics, it projects light beams vertically and horizontally to illuminate both the pedestrian's body and the markings on the road. With an average luminous flux of 100/350 lux, this lighting system provides a stark contrast between the crosswalk and its surrounding environment to ensure the safety of all road users.



ILLUMINATES HORIZONTALLY  
& VERTICALLY

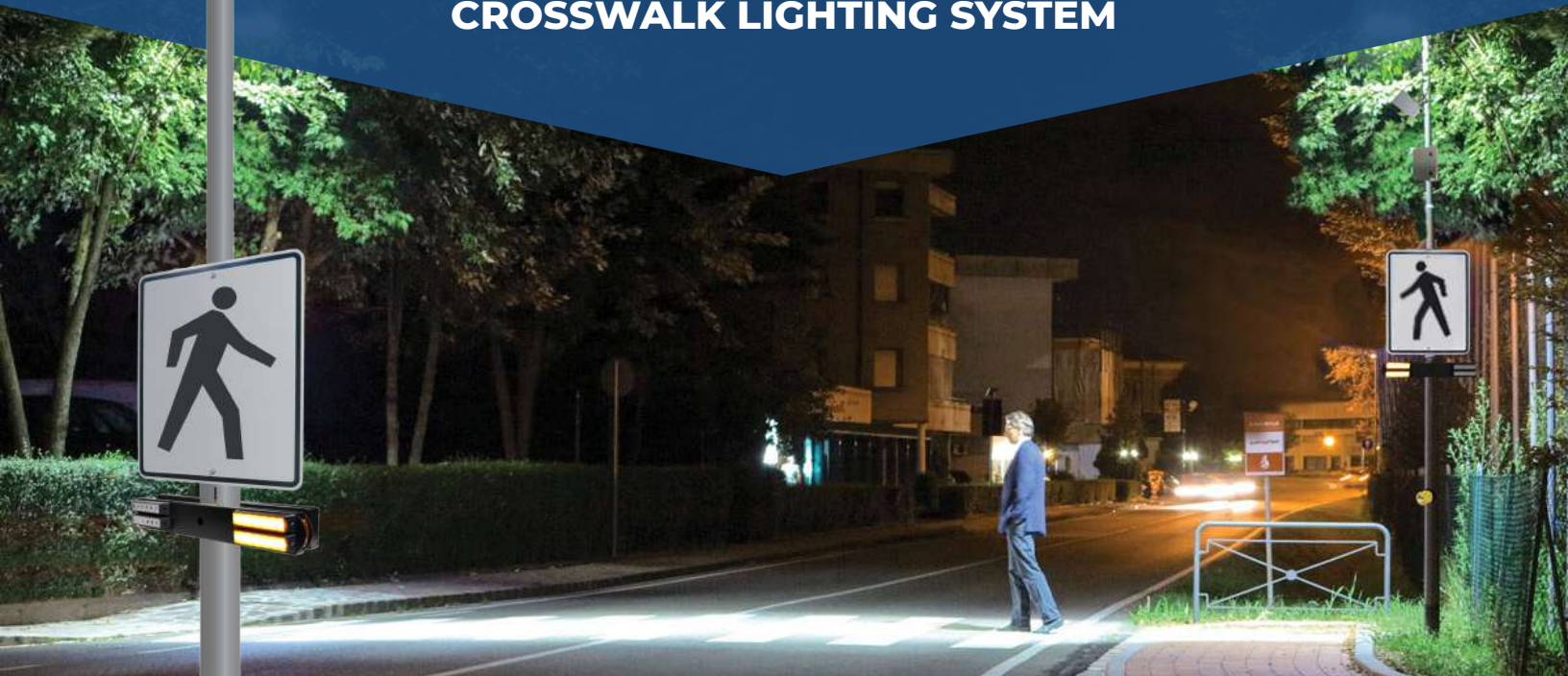


HIGHLIGHTS  
PEDESTRIAN PRIORITY



CLEARLY IDENTIFY  
CROSSWALKS

## STP-LUX CROSSWALK LIGHTING SYSTEM





# FEATURES OF THE STP-LUX CROSSWALK LIGHTING SYSTEM



### Lighting Head

Optic especially designed to precisely delimit the pedestrian crossing. Thanks to its asymmetrical optics, it projects vertical and horizontal light, which allows to illuminate both the crosswalk and the body of the pedestrian. A 0-10 volt control allows the lighting to be maintained at 40% intensity at night time. Lighting increases to 100% only when a pedestrian is detected or press the push button.

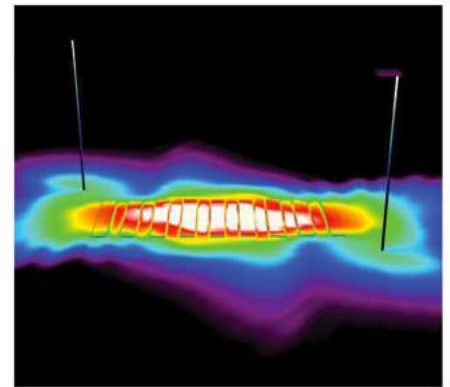


STP-LUX-P350

350 lux  
Maximum  
luminescence

### Pole

100 mm (4") round post in galvanized steel and coated with polyester powder. The holes for passing the electric wires are drilled before painting.



### Rectangular Rapid Flash Beacon lights (RRFB)

MUTCD-compliant, rectangular rapid flash beacons (RRFB) only activate when a pedestrian crosses. RRFB's ensure maximum attention from drivers regarding the presence of pedestrians.

### Pushbutton

Compliant with industry standards, the push button allows pedestrians to increase light intensity and activate RRFB for a period of 30 seconds (programmable as a standard).



AUTOMATIC NIGHT  
ACTIVATION



PUSH BUTTON,  
PEDESTRIAN DETECTOR  
OR BOTH



ENERGY SAVER



FLASHING BEACONS  
LIGHT UP DAY  
AND NIGHT



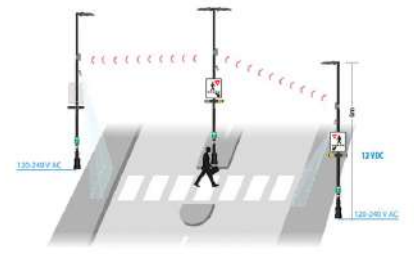
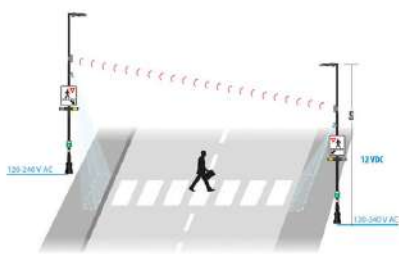
WIRELESS  
COMMUNICATION



EFFICIENT IN ALL  
WEATHER CONDITIONS



# TECHNICAL SPECIFICATIONS OF THE STP-LUX CROSSWALK LIGHTING SYSTEM



## STP-LUX-105

Product Number	#36736 without poles #36533 with 20" poles
Light Heads	105 Watts
Luminous Flux	11,550 lm
Post Height	6 m (20')
Max. Between Posts	10-15 m (33'-49')

## STP-LUX-175

Product Number	#37786 without poles #37787 with 24" poles
Light Heads	175 Watts
Luminous Flux	18,480 lumens
Post Height	7.3 meters (24')
Max. Between Posts	15-20 m (33'-49')

## STP-LUX-I

Product Number	#38185 105W with poles #38861 175W with poles
Light Heads	105 Watts or 175 Watts
Luminous Flux	11,550 lumens
Post Height	6 m (20')
Max. Between Posts	10-15 m (33'-49')

## Activation Options

#36738	Pedestrian Sensor Activation
--------	------------------------------

## Lighting Head

Number of LEDs	80 @ 0.7 ADC
Weight	16.6 kg (37 lb)
Case	Patented SUPERCAST® injected aluminum. Withstands more than 3,000 hours in a "salt spray" chamber. Grey color
Window Type	5 mm Tempered Glass (.188")
Watertightness	IP66 – NEMA 4X
Attachment	Pole Ø 60 mm swiveling 90°
CCT	5700 K
Standard	TÜV – CAN/CSA C22.2, DLC QPL, UL, CE, RoHS
LED Lifespan	L70 > 100,000 hrs
Input Voltage	120-277 VAC
Insulation	Class I
LED Optic	Asymmetrical for pedestrian crossings
Operating Temperature	-40 to +50°C (-40 to +131°F)
Limited Warranty	Five (5) years

## Pole

Diameter	102 mm (4")
Thickness	5 mm (.188")
Bolt Circle	210 mm (8.25")
Anchor diameter required	16 mm (.625") or 19 mm (.75")
Base Cover	Decorative in Aluminum, 760 mm (30") high
Rust Protection	Hot Dip Galvanized
Finish	Polyester powder paint

## Rectangulaire Rapid Flash Beacons (RRFB)

Lamp Size	72 x 159 mm (3" x 6.25")
Compliance	MUTCD and SAE J595 class 1
Color	Amber
Lenses	Clear UV-resistant polycarbonate
Visibility	More than 300 m (1000')
Photocell	Variable according to the ambient lighting
Connector	0 mm OD, Male, 6", IP67
Flashing Type	WW + S
Flashing Speed	60 per minute
Housing	Black painted aluminum
Operating Temperature	-40 to +50°C (-40 to +131°F)
Weight	3.1 kg (6.75 lb)

## Cabinet

Input Voltage	120-277 VAC
Weight	16.6 kg (37 lb)
Case	Waterproof
Finish	Powder-coated polyester Grey color
Battery	AGM 12V
Communication	Wireless 902 Mhz
Range	100 m
Operating Temperature	-40 to +50°C (-40 to +131°F)

## Push Button

Button Size	50 mm (2") in diameter Yellow Color
Contact Type	Mechanical
Compliance	ADA